



HASHEMITE KINGDOM OF JORDAN

MAIN ECONOMIC INDICATORS

NATIONAL ECONOMY DIVISION

POLICES AND STRATEGIES DIRECTORATE

Ministry of Planning and International Cooperation

UPDATED ON 1 /12/2011

Policies & Strategies Directorate
National Economy Division

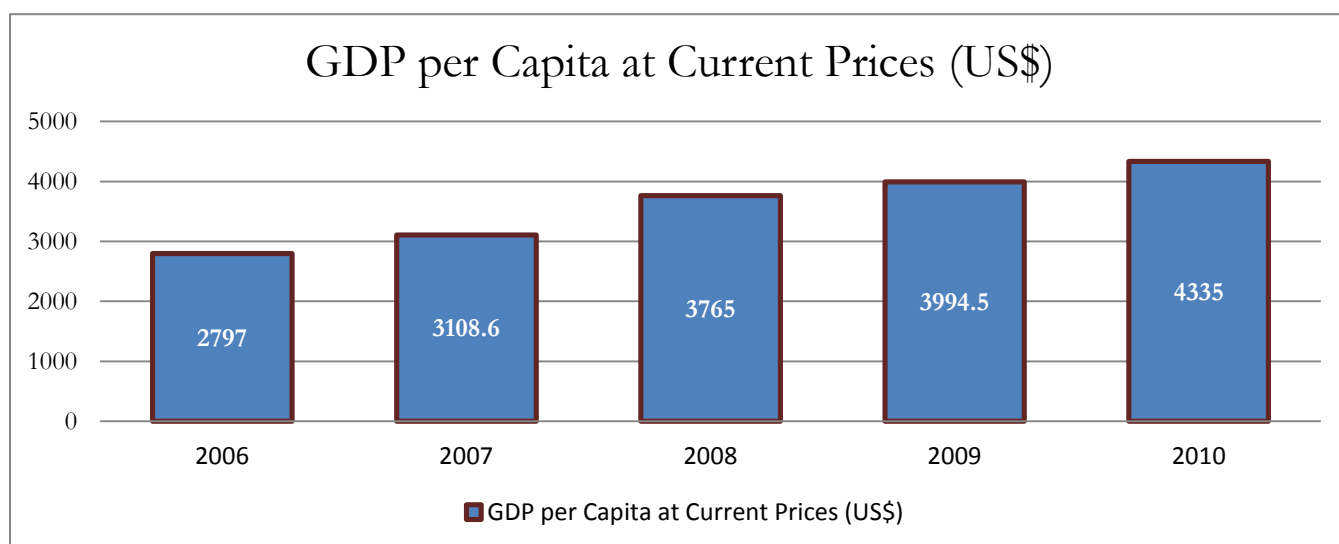
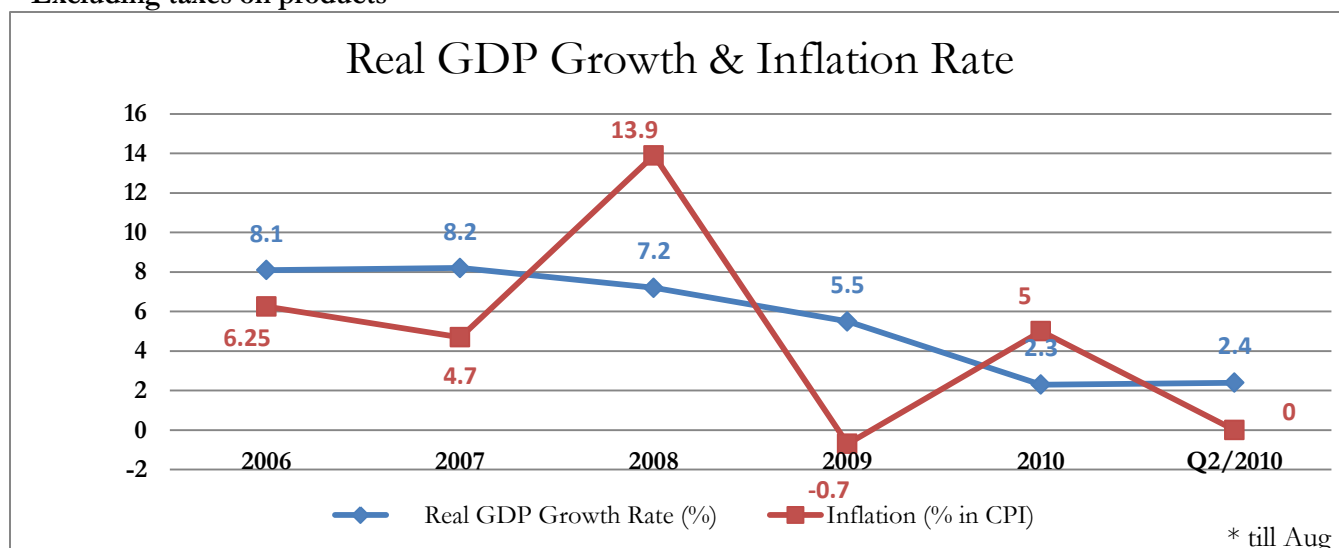
Note: All Figures are in USD (Exchange Rate 1 USD=0.708 JD)

Real Sector

I. Gross Domestic Product (GDP)

	2006	2007	2008	2009	2010	Q2/2010	Q2/2011
GDP at Current Prices (US\$ bn)	15.1	17.1	21.9	23.9	26.5	6.4	6.85
GDP at Constant Prices (US\$ bn)	11.2	12.2	13	13.8	14.1	3.5	3.60
Real GDP Growth Rate (%)	8.1	8.2	7.2	5.5	2.3	1.4	2.4
GDP per Capita at Current Prices (US\$)	2797	3108.6	3765	3994.5	4335	-	-
GDP Deflator	133.8	140.6	168.5	173.2	187.9	180.9	190.3
Industrial Sector Contribution to GDP (%)*	25.1	25.7	25.8	24.7	24.5	24.8	25.1
Service Sector Contribution to GDP (%)*	70.9	70.5	70.3	71.0	71.1	71.1	70.7
Agricultural Sector Contribution to GDP (%)*	4.0	3.8	3.9	4.3	4.4	4.1	4.2

* Excluding taxes on products



Policies & Strategies Directorate
National Economy Division

Note: All Figures are in USD (Exchange Rate 1 USD=0.708 JD)

II. Sectors Contribution to GDP (%)

Sectors	Q2 /2010 (%)	Q2 /2011 (%)
Agriculture, Hunting, Forestry, And Fishing	3.3	3.5
Mining And Quarrying	1.7	1.9
Manufacturing	16.4	16.8
Electricity And Water	2.0	2.0
Construction	4.7	4.6
Wholesale And Retail Trade	7.3	7.6
Restaurant And Hotels	1.1	1.0
Transport, Storage & Communications	13.8	14.0
Finance And Insurance Services	8.3	8.4
Real Estate	10.5	10.5
Community, Social And Personal Services	4.2	4.2
Producers Of Government Services	11.4	11.4
Producers Of Private Non-Profit Services To Households	0.6	0.6
Domestic Services Of Households	0.5	0.5
Imputed Bank Service Charge	-4.7	-4.7
Net Taxes On Product	18.9	17.7
Total	100.0	100.0

III. Sectors Contribution to GDP Growth Rate (Percentage Points)

Sectors	Q2 /2010 (%)	Q2 /2011 (%)
Agriculture, Hunting, Forestry, And Fishing	0.29	0.21
Mining And Quarrying	0.11	0.20
Manufacturing	0.30	0.78
Electricity And Water	-0.08	0.07
Construction	-0.65	0.05
Wholesale And Retail Trade	-0.57	0.45
Restaurant And Hotels	0.04	0.00
Transport, Storage & Communications	0.71	0.62
Finance And Insurance Services	0.74	0.30
Real Estate	0.59	0.24
Community, Social And Personal Services	0.17	0.11
Producers Of Government Services	0.10	0.31
Producers Of Private Non-Profit Services To Households	0.01	-0.01
Domestic Services Of Households	0.02	0.02
Imputed Bank Service Charge	-0.23	-0.18
Net Taxes On Product	-0.14	-0.77
Total	1.40	2.40

IV. Prices

	2006	2007	2008	2009	2010	Till Sep 2011
Inflation (% GDP Deflator)	10.7	5.1	19.8	2.8	8.5	5.1 sec q
Inflation (% in CPI)	6.25	4.7	13.9	-0.7	5	4.5 nov
Food Items Inflation (%)	7.4	8.7	18.6	1.7	5.04	4.3 nov
Producer Price Index (%)	15.8	9.1	55.7	-16.5	-2.4	14.8 oct
Industrial Production Quantity Index (%)	5.8	3.2	1.4	-1.7	-3.1	-0.5 oct
Wholesale Price Index (%)	6.5	8.5	19.4	0.9	3.7	4.6 third q
Agricultural Price Index (%)	15.4	28.9	16.3	-14.9	23	-9.1 oct
Price Indices of Exports (%)	10.9	16.7	54.5	-7.3	-14.5	-
Quantity Indices of Exports (%)	2.5	-6.3	-10	-11.9	35.6	-
Price Indices of Imports (%)	9.4	13.6	20.5	-10.7	23.5	-
Quantity Indices of Imports (%)	0.6	4.1	2.6	-5.4	-12.6	-

V. Projects Benefited from Exemptions Provided by Investment Promotion Law

	2006	2007	2008	2009	2010	First Half 2011
Agriculture						
Number	31	19	9	18	-	-
Capital (mn USD)	81.4	24.3	18.4	56.5	23.2	32.1
Industry						
Number	520	380	413	446	-	-
Capital	2104.4	2488.1	1515.5	2036.7	591.2	689.4
Hotels						
Number	20	13	17	20	-	-
Capital	343.2	574.7	971.8	240.1	974.6	107.6
Hospitals						
Number	5	6	10	6	-	-
Capital	32.6	40.0	63.6	89.0	30.0	19.1
Maritime Transport & Railways						
Number	0	0	7	7	-	-
Capital	0	0	121.2	99.6	71.4	1.7
Other Services						
Number	2	3	11	10	-	-
Capital	28.2	10.2	42.7	50.3	655.1	17.6
Total						
Number	578	421	467	507	-	-
Capital	2589.8	3137.3	2733.2	2572.2	2345.5	867.5

Socio-Economic Indicators

	2005	2006	2007	2008	2009	2010
Key Social Indicators						
Population Number (Million)	5.47	5.60	5.72	5.85	5.98	6.113
Population Growth Rate (%)	2.3	2.3	2.2	2.2	2.2	2.2
Population less than 15 years	37.3	37.3	37.32	37.3	37.3	37.32
Life Expectancy (Years)	71.5	71.7	73.0	73.0	73.0	-
Infant Mortality Rate (Per 1000 Live Birth)	24.0	24.0	19.0	19.0	23.0	-
Illiteracy proportion 15+ year	8.9	9.3	7.9	7.7	7.2	-
Self Employed/Total Employment (%)	9.5	8.9	7.8	8.3	9.1	-
Number of Hospitals	98	101	103	103	104	-
Gender Indicators						
Females in Labor Force 15+ Years (%)	15.1	15.6	14.7	17.8	18.4	-
Female Crude Economic Activity (%)	7.3	7.5	9.3	9.0	9.5	-
Female/Male Ratio for Students in Secondary Education (%)	101.5	102.2	101.4	103.9	103.5	-
Female/Male Ratio for Students in University (%)	100.3	102.4	102.1	105.2	103.5	-

I. Unemployment Rates

	2006	2007	2008	2009	2010	till third Q 2010	till third Q 2011
Unemployment Rate (%)	14.0	13.1	12.7	12.9	12.5	12.7	13.1
Female Unemployment Rate (%)	25.0	25.6	24.4	24.1	21.7	22.3	22.2
Male Unemployment Rate (%)	11.9	10.3	10.1	10.3	10.4	10.5	11.1
Net Job Creation (Thousand), of which:	35*	70	65	69	65.6	-	-
Public Sector (%)	40.7*	31.7	41.4	38.9	28.0	-	-
Private Sector (%)	58.8*	67.3	55.7	56.8	70.7	-	-
Informal Private sector (%)	-	-	2.3	3.7	0.7	-	-
NGO's (%)	0.5*	1.0	0.6	0.6	0.6	-	-

* for the second half 2006.

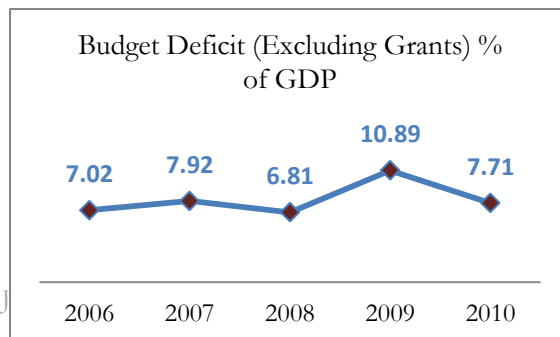
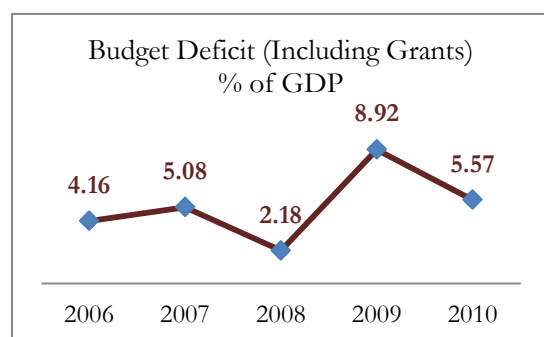
II. Poverty Assessment

	1997	2002/03	2006	2008
Absolute poverty line	JD366 (US\$516)	JD392 (US\$ 553)	JD 556 (US\$ 785)	JD 680 (US\$960)
Poverty incidence	21.3%	14.2%	13%	13.3%

Public Finance

I. Public Finance

	2006	2007	2008	2009	2010	Till oct 2010	Till oct 2011
Total Revenues & Expenditures							
Total Revenues & Grants (US\$ bn)	4.90	5.61	7.19	6.39	6.59	5.34	6.63
Domestic Revenues (US\$ bn)	4.47	5.12	6.18	5.91	6.02	4.93	5.14
Grants (US\$ bn)	0.43	0.49	1.01	0.47	0.57	0.41	1.49
Total Expenditures (US\$ bn)	5.53	6.48	7.67	8.52	8.06	6.33	7.27
% of GDP	36.71	37.88	35.03	35.64	30.42	23.88	25.24
Current Expenditures (US\$ bn)	4.40	5.29	6.32	6.48	6.70	5.41	6.42
Capital Expenditure (US\$ bn)	1.12	1.19	1.35	2.04	1.36	0.92	0.85
Budget Deficit/ Surplus							
Excluding Grants (US\$bn)	-1.06	-1.35	-1.49	-2.60	-2.04	-1.40	-2.13
Budget Deficit (Excluding Grants) % of GDP	-7.02	-7.92	-6.81	-10.89	-7.71	-	-
Including Grants (US\$bn)	-0.63	-0.87	-0.48	-2.13	-1.48	-0.99	-0.64
Budget Deficit (Including Grants) % of GDP	-4.16	-5.08	-2.18	-8.92	-5.57	-	-
Public Debt							
Public Debt (US \$ bn)	10.4	11.6	12.1	13.6	16.2	15.5	17.8
% of GDP	69.0	67.7	55.2	57.1	61.1	58.6	61.9
Net Internal Public Debt (US\$ bn), of which:	3.1	4.2	6.9	8.2	9.7	9.8	11.4
% of GDP	20.3	24.3	31.7	34.2	36.5	37.1	39.60
Treasury Bills and Bonds (US\$ bn)	3.5	4.5	6.2	8.1	9.1	9.4	10.0
Loans and Advances (US\$ bn)	0.4	0.4	1.5	1.4	1.4	1.4	1.2
Outstanding External Public Debt (US\$ bn), of which:	7.3	7.4	5.1	5.5	6.5	5.7	6.4
% of GDP	48.7	43.4	23.5	22.9	24.6	21.5	22.3
US Dollar (%)	30.2	29.4	29.7	34.3	39.3	31.1	38.4
Japanese Yen (%)	18.0	17.6	29.8	26.0	22.7	26.6	21.9
Euro (%)	21.6	22.9	11.5	10.8	8.4	10.1	8.9
Kuwaiti Dinar (%)	13.4	14.0	20.4	18.3	18.8	20.3	19.4



0=0.708 J

External Sector

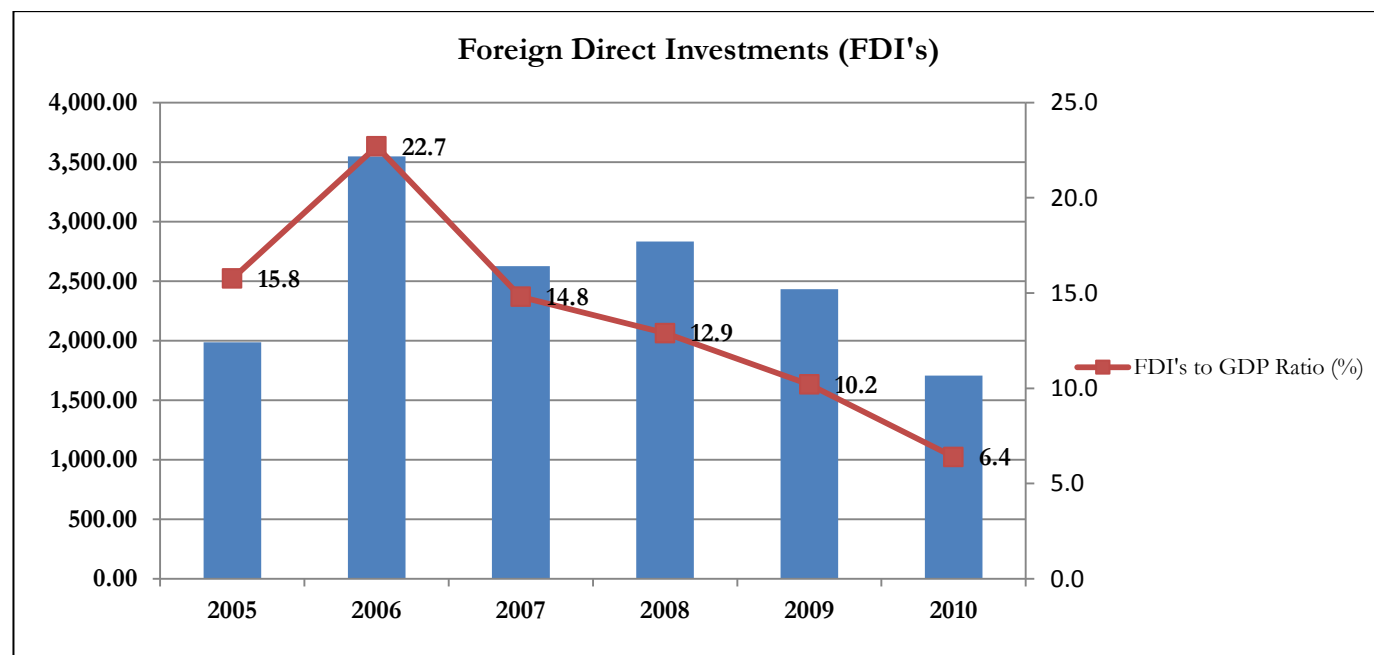
I. Balance of Payments

	2006	2007	2008	2009	2010	Q2 / 2010	Q2 / 2011
Net Current Account (US\$ mn)	-1,728.5	-2,878.5	-2,041.2	-1,128.5	-1,314.7	-558.5	-937.7
% of GDP	-11.5	-16.8	-9.3	-4.7	-5.0	-	-
Net Trade Balance (US\$ mn)	-5,063.1	-6,460.7	-7,181.4	-6,283.6	-6,669.2	-1,642.8	-2,097.3
Net Services Account (US\$ mn), of which:	-63.3	31.1	352.5	741.8	893.1	269.5	14.4
Tourism Income (US\$ mn)	2,063.3	2,314.0	2,949.9	2,919.2	3,422.6	868.5	665.4
Net Income Account (US\$ mn)	453.7	684.5	697.2	604.9	508.1	22.5	8.6
Net Current Transfers (US\$ mn) of which:	2,944.2	2,866.7	4,090.4	3,808.3	3,953.4	792.4	1,136.6
Workers' Remittances (US\$ mn)	2,517.9	2,997.9	3,166.7	3,127.4	3,174.2	784.5	751.8

* for the end of Jul of each year.

II. Foreign Direct Investments (FDIs)

	2006	2007	2008	2009	2010	Q2 / 2010	Q2 / 2011
Foreign Direct Investments (FDI) (US\$ mn)	3,549.0	2,625.8	2,832.9	2,433.5	1,706.2	483.3	439.55



External Sector

III. External Trade

	2006	2007	2008	2009	2010	Till Sept 2010	Till sept 2011
Exports							
Total Exports (US\$ bn)	5.21	5.74	7.96	6.39	7.05	5.2	6.0
Percentage Change (%)	21	10.1	38.6	-19.6	10.2	-	14.5
Domestic Exports (US\$ bn)	4.14	4.50	6.26	5.06	5.96	4.4	5.1
Percentage Change (%)	14	8.7	39.2	-19.2	17.8	-	15.6
Imports							
Imports (US\$ bn)	11.6	13.7	17.0	14.3	15.6	11.3	13.5
Percentage Change (%)	10.0	18.7	24.1	-16.2	9.3	-	18.8
Trade Balance (US\$ bn)	-6.4	-8.0	-9.1	-7.9	-8.6	-6.15	-7.48
Economic Openness (%)	100.2	102.5	105.8	80.2	80.2	-	-

IV. Domestic Exports

	2006	2007	2008	2009	2010	Till sept 2010	Till sept 2011
Geographic Distribution of Domestic Exports							
Arab Countries (%)	42.6	43.8	41.7	51.6	50.3	49.8	47.9
European Union Countries (%)	3.7	3.5	4.1	3	3.7	3.9	5.0
NAFTA Countries (%)	31.3	27.8	16.8	17.3	15.9	16.3	16.0
Non-Arab Asian Countries (%)	19.5	21.3	33.3	24.9	24.3	24.7	25.6
Other Countries (%)	2.9	3.6	4.1	3.2	5.8	5.3	5.5
Domestic Exports by Commodity							
Clothes (%)	30.1	26.5	16.2	16.5	14.8	12.8	15.1
Potash (%)	6.2	7.1	12.3	8.9	10.7	8.8	12.1
Medical & Pharmacy Products (%)	7.2	9.4	8	9.3	10	7.8	7.1

External Sector

V. Imports

	2006	2007	2008	2009	2010	Till sept 2010	Till sept 2011
Geographic Distribution of Imports							
Arab Countries (%)	35.8	33	33.2	32	35.1	33.7	37.8
European Union Countries (%)	23.6	24.3	21.1	21	19.9	20.7	20.5
NAFTA Countries (%)	5.2	5.1	5.1	7.5	6.3	6.2	6.3
Non-Arab Asian Countries (%)	27.9	27.7	29.1	29.6	30.1	30.5	27.0
Other Countries (%)	7.5	9.9	11.5	9.9	8.6	9.0	8.5
Imports by Commodity							
	2006	2007	2008	2009	2010	Till sep 2010	Till sep 2011
Crude Oil (%)	17.5	15.1	15.4	10.9	12.2	12	14.4
Vehicles, Motorcycles and spare parts (%)	9.7	8.7	7.6	11.3	7.8	9.1	6.4
Textile yarn, Fabrics, Made up articles & Related Products (%)	6.4	4.9	3.8	3.7	3.6	3.6	3.5

VI. External Trade with USA

	2006	2007	2008	2009	2010	Till sept 2010	Till sept 2011
Exports to the United States (US\$ mn)	1302.3	1240.6	1047.6	873.2	931	697.9	789.3
Percentage Change (%)	15.7	-4.7	-15.5	-16.6	6.6	-	13.1
Imports from the United States (US\$ mn)	554.6	633.1	777.1	978.3	862.1	636.3	754.2
Percentage Change (%)	-5.7	14.2	22.7	25.9	-11.9		16.2
Trade Balance (US\$ mn)	747.7	607.5	270.5	-105.1	68.9	61.6	35.0

Monetary Sector

I. Money Supply, Deposits, Credit Facilities

	2006	2007	2008	2009	2010	Till oct 2010	Till oct 2011
Money Supply (M1) (US\$ bn)	6.4	6.8	7.9	8.5	9.3	9.4	10.2
Money supply (M2) (US\$ bn), of which:	19.93	22.04	25.85	28.3	31.5	31	33.6
Percentage Change (%)	14.1	10.6	17.3	9.3	11.5	9.6	7.3
Foreign Assets	10.5	11.1	10.0	12.5	14.2	13.5	14
Domestic Assets	9.5	10.9	15.8	15.7	17.3	17.5	19.8
Total Deposits (US\$ bn)	20.61	22.58	25.57	28.67	31.8	31.4	34.1
Deposits in JD (US\$ bn)	13.31	15.0	18.85	22.41	24.9	24.5	26.57
Deposits in Foreign Currencies	7.3	7.58	6.72	6.26	6.9	6.9	7.53
Credit Facilities Extended By Licensed Banks (US\$ bn)	13.8	16.0	18.4	18.8	20.4	20.1	22.03
Central Government (US\$ bn)	0.051	0.06	0.053	0.059	0.158	0.12	0.22
Private Sector (Resident) (US\$ bn)	12.7	14.7	16.8	17.0	18.3	18.1	20
Gross Official Reserves (US\$ bn)	6.11	6.87	7.74	10.9	12.24	11.2	11
Coverage of Imports (month)	5.1	4.7	6.2	8.1	7.9	-	6.6
Returned Cheques (US\$ mn)	1,125.8	1,983.9	3,000.7	3,006.2	2,652.1	-	-

Monetary Sector

II. Interest Rates Structure

	2006	2007	2008	2009	2010	Oct-10	oct-11
Re-Discount Rate	7.5	7	6.25	4.75	4.25	4.25	4.5
Interest Rate on Repurchase Agreements	8.5	6.75	6	4.5	4	4	4.25
Overnight Deposit Window Rate	5.25	4.75	4	2.5	2	2	2.25
Weighted Average Interest Rates on Interbank	6.495	5.147	4.649	2.645	2.15	2.15	2.649
Weighted Average Interest Rates on Deposits with Licensed Banks							
Demand	0.87	0.94	1.01	0.67	0.44	0.41	0.43
Saving	0.99	1.1	1.04	0.84	0.77	0.77	0.66
Time	5.13	5.56	5.66	4.23	3.4	3.39	3.44
Weighted Average Interest Rates on Licensed Banks Credit Facilities							
Overdrafts	9.23	9.83	9.31	9.03	9.12	9.27	8.72
Loans and Advances	8.56	8.86	9.48	9.07	9.01	8.91	8.69
Discounted Bills & Bonds	8.72	9.45	8.89	9.17	9.41	9.15	9.36

Policies & Strategies Directorate
National Economy Division
Note: All Figures are in USD (Exchange Rate 1 USD=0.708 JD)

Amman Stock Exchange

I. Amman stock Exchange

	2006	2007	2008	2009	2010	Till sep 2010	Till sep 2011
Share Price Index (SPI)(points)	4,259.7	3,675.0	2,758.4	2,533.5	2,373.6	2,335.6	2,018.2
Traded Volume (US\$ mn), of Which:	23,828.9	17,440.7	28,697.7	13,651.6	9,449.1	8,547.5	3,573.4
Percentage Change (%) “compared to previous year”	344.8	-13.1	64.5	-52.4	-30.8	-37.4	-62.2
Financial Sector (US\$ mn)	18,645.0	12,400.0	13,614.3	8,961.5	5,895.6	5,362.8	2,242.0
Services Sector (US\$ mn)	1,689.2	2,341.8	7,658.5	2,868.4	2,464.2	2,215.0	673.4
Industrial Sector (US\$ mn)	3,494.9	2,698.9	7,424.9	1,821.7	1,089.3	969.7	658.0
Number of Listed Companies	201.0	245.0	262.0	272.0	277.0	-	248.0
Market Capitalization (US\$ bn)	37.7	41.3	35.9	31.8	30.9	-	27.3
Market Capitalization / GDP (%)	326.6	289.0	216.7	149.6	122.7	-	103.0
Foreign Investment (%)	45.0	48.9	49.2	48.9	49.6	-	51.1

